



## *Leacock Communicator*

### *Leacock Presbyterian Church*

687-6619

[www.leacockpres.org](http://www.leacockpres.org)

Volume 52, Number 4

May 2012

#### *Notes from the Manse*

One Sunday night, back when I was a teacher, I offered to do a favor for a friend. The boarding school where I taught was set in the hills of western Connecticut, a good distance from the nearest town of any size. Another member of the English department had gone away for the weekend, and she needed someone to pick her up at the bus station and give her a ride back to campus. It didn't seem like any big deal, just something you'd do without really thinking about it for a colleague. My mind was already preoccupied with I don't really remember what, I guess just all the things that went into a normal teacher's week, papers to grade, lesson plans to fine tune. When I picked my friend up—I'll call her Holly—I didn't expect much of our ride back to campus, just the usual grumping about "the grind" or idle chat about what we might do during the summer break not too far away. However, at first, she was just quiet. She was always pretty soft-spoken, so that wasn't really all that strange. But then I noticed out of the corner of my eye that tears were slipping down her cheek. When I asked why, she started to tell me a story, her story, of pain. She was a poet, who had published a biography of some famous woman writer, who I forget. And she had come to my school, filled with excitement at the prospect of working with, inspiring, youth to write or at least love writing. But then she met one of the senior members of the department, a woman who went out of her way, for months, to pick at Holly, to "correct" her for big and little things, to grind her down and make her doubt her capacity to be a teacher. Her story didn't surprise me—I knew that teacher; I'd seen her do her thing with other new faculty members; I had had my time with her. I don't know why Holly chose to talk to me. We'd always gotten along well enough, but we didn't socialize that much. I wasn't all that much more experienced than she. But I guess she thought I might listen, and I did. I guess she thought I might understand, and I did. I guess somehow she knew I would care about her, and I did.

No miracles occurred that night. She left the school after that year; I don't know if she ever taught again. But I hope my indignation over her treatment, my letting her know she wasn't the first victim of that other woman, made her feel a bit better. I hope she believed me when I told her how much I respected her as a teacher. When she first started talking that night, I felt woefully unprepared. But in a way, I had been preparing for a long time, without really knowing it. I was preparing when I wrestled with what life was all about, in books, at college, in long discussions with friends late at night. And I was preparing for it in my journey of faith, in my Communicants Class at my church during high school, in my pondering over Scripture on my own and in numerous courses, in listening to others wrestle with the word. I never spoke a word to Holly about faith that night. But I believe I was a witness to what I believed by being there for her.

Easter is not over. It never is. As we move toward Pentecost, let us, like the disciples in *Acts*, prepare to be witnesses of our Lord, through prayer, through reflecting on what the cross and the empty tomb say to us about love and life and serving others. For we never know when we will be called upon to be witnesses or what form that witness may take. But that time will come, again and again, a time for grace.

Rev. Robert W. Birch`



**LECTIONARY  
FOR MAY**

- May 6 (5th Sunday of Easter)  
Acts 8:26-40  
Psalm 22:25-31  
1 John 4:7-21  
John 15:1-8
  
- May 13 (6th Sunday of Easter)  
Acts 10:44-48  
Psalm 98  
1 John 5:1-6  
John 15:9-17
  
- May 17 (Ascension of the Lord)  
Acts 1:1-11  
Psalm 47:1-9 or  
Psalm 93:1-5  
Ephesians 1:15-23  
Luke 24:44-53
  
- May 20 (7th Sunday of Easter)  
Acts 1:15-17, 21-26  
Psalm 1  
1 John 5:9-13  
John 17:6-19
  
- May 27 (Day of Pentecost)  
Acts 2:1-21 or  
Ezekiel 37:1-14  
Psalm 104:24-34, 35b  
Romans 8:22-27 or  
Acts 2:1-21  
John 15:26-27; 16:4b-15

**COME, SING WITH US**  
*“My life flows on in endless song  
 above earth’s lamentation;  
 I hear the real, tho’ far off hymn  
 that hails the new creation.  
 Above the tumult and the strife I  
 hear the music ringing,  
 It sounds an echo in my soul; how  
 can I keep from singing?”*

Robert Lowery

The poet’s words surely resound with many of us as we go through our days with a song in our heart and a melody on our lips. This music of our faith can be heard and sung at our annual Old Leacock Hymn Sings which begin the first Sunday in May at 7:00pm. This year we will host five Hymn Sings with attendees choosing what we sing.

Do you have a favorite we have not sung in awhile? Is there an old hymn you want to sing again? Is there a new favorite you have learned? Come and sing with us May 6.

**PENTECOST SUNDAY**

**MAY 27**

**COMMUNION**

**ONE SERVICE**

**9:30AM**



**CONGREGATIONAL LIFE  
COMMITTEE**

We are excited that new members will be joining Leacock Presbyterian Church in June. To celebrate, the Congregational Life Committee is planning a reception after the 10:30 service on June 3. Please stay to enjoy some refreshments and help welcome those joining our fellowship.

We are also thinking of our high school graduates in June. If you are graduating (or are the parent of a graduate), please contact Esta Fisher (397-1151) or the church office (687-6619). We would like to know what school you attended and, if you know, what your plans are for after graduation.





### FOOD BANK IN NEED

The Paradise Area Food Bank has been serving more and more families this past year. We have been maintaining our services with donations from community organizations (PVIS and the Lions Club are regular contributors) and our share of funds from the CROP Walk (which was very low this year).

At this time, demand is heavy enough that we also need to ask for collections of food from our member churches (Leacock Presbyterian, Gracepoint, Bible Fellowship, and St. John's United Methodist). Our congregation is being asked to collect the following:

- ✦ instant rice
- ✦ stew and chili
- ✦ baked beans
- ✦ soups (any except creamed)
- ✦ canned tuna and chicken

During the month of May, please place your donations in the FOOD BANK box in the Narthex. We thank you, in faith, for your generosity.

### PRAYER FAMILIES

- May 6 Barry & Roberta Graybill
- May 13 Ryan & Angela Ridings Graybill, Madison Paige & Bailey Grace
- May 20 Shirley Harsh
- May 27 Michael & Kelly Hartmann, Owen & Nora



### TRUSTEE NOTES

A very special thank you to all those who helped with spring work day. Though work day was a little early this year, we were able to complete many task preparing both churches for Easter services.

Please come join in during fall work day as the more hands available to share the workload, the more we can get completed.

In a continued effort, we are still trying to raise capital for the Narthex flooring project. Please give as you can to help us reach this goal. Building Fund Offering envelopes will be available in the pews during the month of May. Many thanks from all the Trustees

### COMMUNICANTS CLASS

- April 29 6:00PM
- May 13 6:00PM

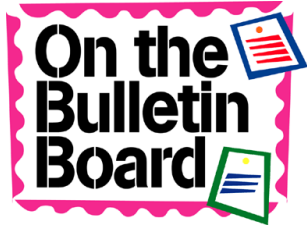
### SUMMER SUNDAY SCHOOL

For teens and adults Sunday School this summer promises a time for faith building and a time for adventure. In June and July the Lectionary passages for the day will be discussed either in retrospect after having attended early worship or in preparation for the second service.

August will take us to Africa, New Zealand, China, and skydiving as we view pictures and listen to folks recount their experiences across the continents or above the Lancaster County landscape. Join us for this time of learning and fellowship.

All children will be meeting in the Elementary Room for Awesome Adventures: God's Amazing Kids.

Because of Old Leacock worship, Sunday School will begin promptly at 9:30am at Paradise.



## APRIL SESSION SNIPPETS

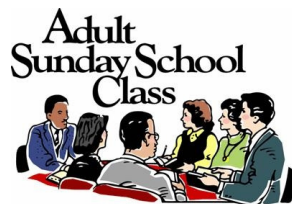
The Session and Trustees met together April 19 to share their plans for the year and communicate items of mutual concern.

After enjoying a time of fellowship and refreshments, each board adjourned to their respective meetings. Session actions included the following:

- Designating free will offerings from the Old Leacock Hymn Sings to the Emergency Fund
- Setting April 29 as “Sixty Sunday” for the Organ Fund
- Scheduling reception of adult new members for June 3
- Approving the Promissory Note for loans from the congregation for the Organ Fund
- Approving job descriptions for all paid church employees
- Canceling paid advertising in the Lancaster newspapers and the *Penny Saver*
- Designating May as Food Bank collection month

- Scheduling a worship service led by the women of the church for Mother’s Day, May 13
- Approving vacation for Rev. Birch from May 14 - 21

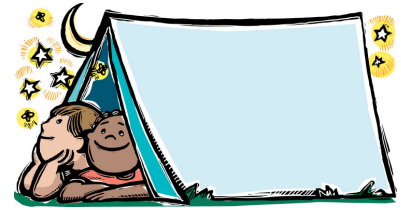
Rev. Birch used the final half hour of the meeting to introduce elders to the New Form of Government of the PCUSA, focusing on the first chapter, “The Mission of the Church.” Ruling elders have received individual copies of the *Book of Order, 2011-2012*, and will be studying and discussing its content at subsequent Session meetings for the rest of the year.



## ADULT SUNDAY SCHOOL

The adult Bible Study and Current Issues Discussion Groups will end on May 20 and resume in September.

The adult Bible Study Group is transitioning from Growing Through Life’s Challenges to the study of Paul’s letter to the Romans entitled, *The Christian Story*. All are welcome to one Sunday or as many as suits your schedule.



## SUMMER CAMPING OPPORTUNITIES

Have you been looking for something a bit different for your children or grandchildren to do this summer? Do you want to provide them with a fun-filled adventure that will nurture their physical and social development as well as enhancing their spiritual growth?

Look no further!

Just over the river and through the woods lies Camp Donegal, a mere forty minute drive that will transport your kids into a whole new world. Camps are available for ages kindergarten through senior high. And there are even family camping opportunities.

For more detailed information, pick up a brochure at the back of the sanctuary, see the summer camp schedule posted on various church bulletin boards, or check online at [office@Campdonegal.org](mailto:office@Campdonegal.org).

---

There are two ways to live your life. One is as though nothing is a miracle. The other is as though everything is a miracle.

- Albert Einstein



## Community Events



### COMMUNITY OUTREACH

(Next Community Outreach Meeting: Thursday May 4 at 7:30pm in the choir room.

All are welcome to join us.)

The Community Outreach Committee is keeping busy these days. On April 22, the book discussion group had a wonderful and lively discussion of *The Help* by Kathryn Stockett. We will be holding a pot luck dinner and movie night on Sunday, May 27 at 5:30pm to watch the movie. This is a community-wide event, so please join us and bring friends and neighbors.

Beginning May 1 and for two months afterward, the Who's Your Neighbor? Map will be up, and we will (with the help of the deacons) be mapping Leacock families to see who lives where, so we can begin our plan for Caring Families, small groups who will nurture each other.

We still need child-loving baby sitters to offer their time twice a year, in the fall and the spring, so

we can provide this service to as many parents as need it. Please let Emily Birch or Janet Huffman know if you would be willing to babysit.

In May we will also be focusing on the food bank. Look for a donation box in the Narthex where you can drop off food donations. Our youth will also be collecting for the food bank at Zimmermans on a Saturday yet to be determined. If anyone is interested in finding out more about the food bank, please join us on Thursday, May 4 at 7:30pm for a monthly meeting, where Karen Homsher will be describing the work of the food bank.

Movers and Shakers continues to meet every Monday and Wednesday at 6:00pm unless otherwise noted in your bulletin.

Board Game Night will be held on Tuesday, May 29 at 6:30pm.

And, as always, don't forget, that we can also use volunteers to help serve the meal at The Factory Youth Center every second Thursday. Please see Karen Homsher if you would like to help.

Emily Birch,  
Community Outreach Chair



### MARK YOUR CALENDARS:

Every Monday & Wednesday  
(unless otherwise noted)  
6:00pm  
Movers and Shakers  
(exercise class  
with walking videos,  
Come do as little or as many 1-3  
miles of walking as you'd like)  
*There will be no Movers and  
Shakers  
Monday May 14 and  
Tuesday May 16*

Sunday, May 27  
5:30pm  
Pot Luck Supper  
and movie  
*The Help*

Tuesday, May 29  
6:30pm  
Board Game Night

Keep your feet on the ground, but let your heart soar as high as it will. Refuse to be average...

Arthur Helps, British Historian

## STEWARDSHIP REPORT - FINANCIAL UPDATE MARCH 2012

	<b>Offering, March</b>		<b>Expenses, March</b>	
	<u>2012</u>	<u>2011</u>	<u>2012</u>	<u>2011</u>
Monthly Total	\$13,722	\$16,541	\$18,770	\$20,203
Year-to-Date	\$46,086	\$56,779	\$51,566	\$58,734

### **Budget Tracking Through March**

	<u>2012</u>	<u>2011</u>
Total Annual Budget	\$247,355	\$250,125
Year to Date Expenses	\$51,566	\$58,734
% of Budget Spent	20.8%	23%

## Stewardship Report



Our offering this month is lower than March of 2011, but as usual our ability to manage and control expenses is displayed. Our total percent of budget expended is 20.8% or \$51,566.00 versus 25% or \$61,839 if the entire budgeted amount had been spent.

In addition to the generous giving of offerings for our operating budget, March saw strong contributions to our special funds. \$2,056 was given to special funds, and of this amount, \$1,600 was for the Organ Fund. The Pic-A-Pipe program is still going on, and I know the Organ Committee is making a drive for \$60,000! I can hardly wait, because I am sure Di-

anne will give it a good workout for us during worship services. I can almost imagine the joyful sound washing over everyone in the sanctuary, and then the feel of the vibrations in my chest!

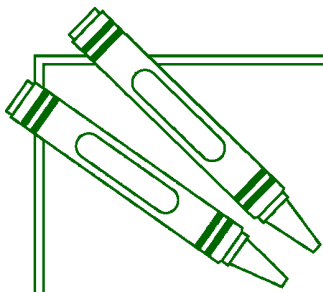
The Stewardship Committee thanks everyone for all donations small and large, not only of money but of time and talent as well.

Lancaster General Hospital has scheduled community blood drives throughout the year at the following locations. Won't you consider giving blood - every pint is very important!

### BLOOD DRIVE SCHEDULE 2012

<u>Date</u>	<u>Place</u>	<u>Time</u>
Thursday, May 17	Greenfield Corp Center	10:00am to 2:00pm
Thursday, May 24	Gordonville Fire Company	2:00pm to 7:00pm
Wednesday, May 30	Kinzer Fire Hall	2:00pm to 7:00pm

The Lancaster General Suburban Outpatient Pavilion (Health Campus) Blood Drive is located in Building 2104, Suite 202. The hours are Monday, Wednesday, and Friday 8:00am to 7:30pm. For more information call 544-0170.

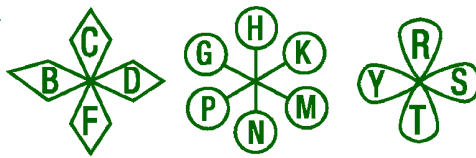


# Just for **KIDS**

## You Are Special!

Have you heard that no two snowflakes are the same? Each is different - unique - special ... just like each of God's children.

Here are some words from the Bible that talk about this. Use the code to find the missing letters.



“\_ \_ e \_ e a \_ e \_ i \_ \_ e \_ e \_ \_  
 \_ i \_ \_ \_ o \_ \_ i \_ \_ , \_ u \_  
 \_ e \_ a \_ e \_ \_ i \_ i \_ .” | Corinthians 12:4  
 “\_ ou a \_ e \_ \_ e \_ o \_ \_ o \_  
 \_ \_ i \_ \_ , a \_ \_ ea \_ \_  
 o \_ e o \_ \_ ou i \_ a \_ a \_ \_  
 o \_ i \_ .” | Corinthians 12:27

Answer: “There are different kinds of gifts, but the same spirit.”  
 “You are the body of Christ, and each one of you is a part of it.”

## THURSDAY WOMEN'S BIBLE STUDY

The Women's Bible Study will meet on Thursday, May 10, at 9:30am at the home of Shirley Musselman.



*Women's Sunday*

## WOMEN'S CHURCH SERVICE

Leacock women will be leading both worship services on Sunday, May 13 (Mother's Day). If you are interested in helping with this service (sorry men, women only), please let Emily Birch or Kris Shirk know.



"I'm following pastor on Twitter."



## CARING FAMILIES - WHO'S YOUR NEIGHBOR?

We all lead extremely busy lives here at Leacock, and often, it seems difficult to find the time to get to know each other better, or to spend as much time with each other on Sunday mornings before and after church as we might like.

Sometimes, we can be so busy that we lose track of our own members. We'd like to bring some of that old-fashioned feel of time back to the Leacock community, time for visiting and enjoying each others' company as well as taking care of each other and helping each other out when needed.

It would be nice to know that there is always a group of people close by to depend on when, for instance, you'd like some company for a doctor's appointment, or need a ride to church, or are too sick to go out and need someone to pick up some medicine for you, or maybe your family is away, and you just want to go out and enjoy brunch with someone after church.

We're working on putting together

small groups of Leacock caring families who can be there for each other, and we're hoping this will be a way to strengthen old friendships while forging new ones.

During May and June, we will be mapping the families at Leacock so we can see who lives where and start forming these caring families by geographic proximity.

On May 1, a large map will be posted on the bulletin board in the hall behind the Sunday school classrooms (across from the women's room). You will note that it has been divided into sections by color. Please locate your address on the map and which color is associated with your address. Stick an appropriately colored pin to mark your home and then print your name and address on the appropriate colored address sheet on the table below the bulletin board. (Directions will be provided.)

We will be grouping families according to neighborhoods. Later this fall, we will have a "kick-off" potluck dinner so that families can get to know each other, and we will explain in detail the nature of these caring families.

If you have any questions, please see Lois Snader or Emily Birch.





## Matters of Faith—Questions for a Pastor

I was happy to receive a new note from my mysterious questioner—complete with a few more questions! He or she seems to be pleased with this column so far, and for that I am glad. The person does choose to remain anonymous, content to offer questions that are hoped to be of interest to many folks. And that is fine (though I have to admit I still am curious; if you do reveal yourself, I promise not to tell!). Anyway, on to the fourth question in the list, which happens to be particularly appropriate for the day after Earth Day—Do animals have souls?



Let me say at the outset there is no consensus on this matter. There are some who vehemently insist that animals do not have souls, that human beings, by being created in the image of God, are unique, and part of that uniqueness is an immortal soul. One individual argued that since Scripture indicates persons have souls and animals are not persons, therefore they must not have souls. Some of the earliest Christian thinkers contended that only humans had souls, which, they said, were of far greater worth than the body, which was only intended to be an instrument or tool of the soul.

However, this was not originally a biblical notion. Instead, it was a reflection of such Greek philosophers as Plato, who thought the soul was immortal, divine, and imprisoned in the body. The Hebrew Bible tended to see human beings as an integrated whole of body and spirit, and this applied to animals as well. In part, the debate is a product of translation. One of the key Hebrew words is *nefesh*, which is often translated as “soul,” but more commonly means “living being.” To love God, therefore, with all one’s *nefesh*, as in *Deuteronomy 6:5*, is not to love God with only a part of oneself, but rather with one’s whole being, body and soul. In the ancient Hebrew way of thinking, no creature can live without God sending God’s *ruach* or spirit, and all living creatures, human and not, have this spirit. Jesus and later Paul, both Jews, seemed to share this way of thinking, for both stressed a physical, bodily resurrection. As the risen Jesus told the disciples in *Luke*, he was not a ghost or spirit, not some kind of disembodied soul. In fact, he made a point of eating fish with them. And remember the Apostle’s Creed affirms the resurrection of the body. Thus, the original biblical idea seems to have been that humans and animals alike had souls in the sense of being living creatures with body and spirit.

Scripture also seems to indicate that animals will share in the redemption of the world—*Isaiah* speaks of the wolf and lamb feeding together in the new heavens and earth; Paul, in *Romans*, describes a wounded creation longing to be set free by the children of God; and *Revelation 6:5* shows that God intends to make all things new. Later Christians agreed: John Wesley preached that animals will share in the redemption and Pope John Paul II said simply that animals do have souls. Now, some say that yes, animals, have souls; theirs are just inferior to those of humans. Others respond by saying that if the mark of a soul is love, then animals sometimes can show a remarkable capacity for loving. In the end, everyone will have to answer this question for him or herself. But it is interesting to note that the word “animal” comes from a Latin word “*anima*”—which means soul.

# **SIXTY SUNDAY**

**April 29, 2012**

**Take the Organ Fund to \$60,000**

**Goal: Raise \$60,000 by the End of May.**

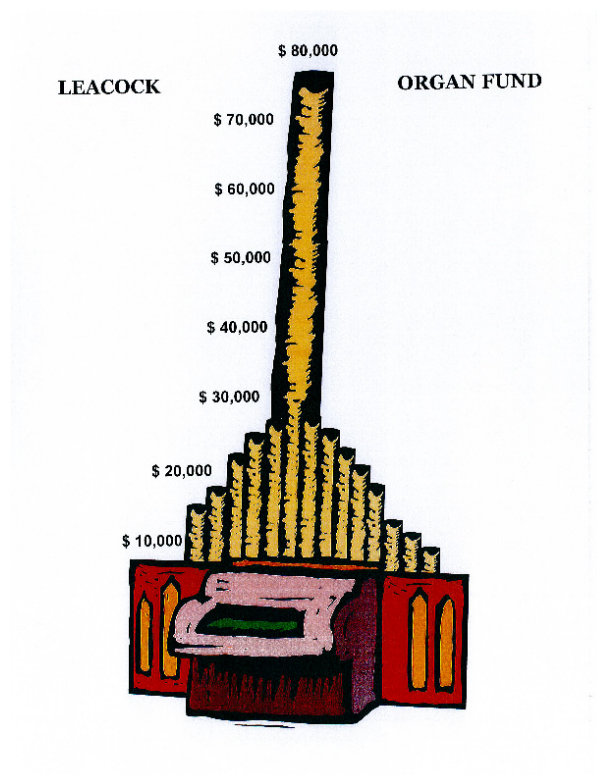
**There will be a Special Offering on April 29.**

**Buy a Pipe through the Pic-A-Pipe Program.**

**Make a Tax Deductible Donation.**

**Save your Loose Change in the Leacock Bank.**

**Watch for more Fund Raising Projects.**



**RESPONSIBILITIES AT LEACOCK CHURCH  
MAY AND JUNE**

**NURSERY**

If you are unable to serve as a volunteer, PLEASE TRADE WITH SOMEONE SCHEDULED ON ANOTHER SUNDAY. Call the office secretary, 687-6619, so she can make the bulletin change. THANK YOU!

May 6	8:00	Skip Brackbill
	10:30	Michele and Ryan McLaughlin
May 13	8:00	Tom and Vicki Burkins
	10:30	Johanna Gingher and Deb Beane
May 20	8:00	Sue Funk
	10:30	Bob and Margy Hershey
May 27	9:30	Shirley Bernard and Valerie Ruhl
		ONE SERVICE

There is no nursery at 8:00am (Old Leacock) in June

June 3	10:30	Carol Shearer and Fran Sattazahn
June 10	10:30	Marie and Rich Glass
June 17	10:30	Kelly and Mike Hartmann
June 24	10:30	Kris and Allison Shirk

**DEACON RESPONSIBILITIES**

(Transportation for School House Friends & Flower Deliveries)

May	Dot Buckwalter
June	Ellen Barnes

**WELCOME CENTER**

8:00am Service

May	Dick Miller
-----	-------------

10:30am Service

May	Lois Snader
June	Shirley and Lori Smith
July	Ron and Sue Esch
August	Fran Sattazahn

**USHERS**

**Donald Andrews, Head Usher**  
**8:00 Service, (687-7878)**

**Ed Margerum, Head Usher**  
**10:30 Service, (442-4027)**

PLEASE NOTE -- If you are unable to serve the month or part of the month you are scheduled for, please try to trade with someone else then contact the head usher. They will contact the church office. THANK YOU!

MAY

Ralph Shank  
Karen Boyer  
Nick Lopez  
Evie Lopez

Steve Boas  
Charlene Boas  
Keo Phongxaysanith  
Robert Brackbill

JUNE

Tracy Dippner  
Ellen Barnes  
Tom Burkins  
Vicki Burkins

Robert Gingher  
Johanna Gingher  
Robert Hershey  
Margy Hershey

Please see separate icon  
on the front page  
for the May Church  
Calendar



Leacock Presbyterian Church  
3181 Lincoln Hwy East  
Paradise, PA 17562

Address Return Required

Non-Profit  
US Postage Paid  
Permit #951  
Lancaster, PA



**THE LEACOCK COMMUNICATOR**  
Editor - Vicki P. Burkins, 392-7253  
[vicki.burkins@gmail.com](mailto:vicki.burkins@gmail.com)